



Powerful durable wet and dry vacuum cleaner!

**SW20 plus**

# SW20 plus



The versatile universal unit is distinguished by its special flexibility.

A robust high performance unit, the vacuum cleaner and water extraction functions are combined in one appliance.

- Multifunction handle
- Patented float system

## Technical data:

Total power max	1100 W / 230 V
Vacuum	210 mbar
Volume dustbag	10 liter
Volume tank	9 liter
Castors	5
Cable length	10 m
Weight	10 kg
Dimensions (l/w/h)	38 x 38 x 59 cm

## Completely included:

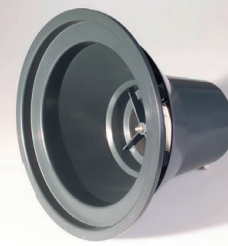
020.567	Suction hose 3 m, with hand tube
021.601	Float insert complete
645.003	Inox tube with clip
645.002A	Inox tube
645.004	Upholstery nozzle
645.006	Rubber crevice tool
645.103	Combi nozzle
646.300	Water suction nozzle, 37 cm
20122519	Dustbag basket with filter complete
-	Dustbag (1 piece)

## Special accessories:

020.320	Filter cloth
020.430	Dustbag (10 pieces)
645.005	Dropery brush
645.009	Rubber crevice tool long
645.103	Combi nozzle
646.200	Hard floor nozzle with brush strip, 30 cm
646.300	Water suction nozzle, 37 cm
646.520	Turbo brush with air drive, 28 cm
646.600	Turbo brush with air drive, 16 cm
646.710	Hard floor nozzle with brush strip, 36 cm



5 castors for stability and agility



Filter system with sensational separation



Ergonomic handle and cable strain relief



Robust plug-in suction hose



## Switzerland

Cleanfix Reinigungssysteme AG  
Stettenstrasse 15 | 9247 Henau-Uzwil/SG  
Tel. +41 71 955 47 47 | Fax +41 71 955 47 60  
info@cleanfix.com

[www.cleanfix.com](http://www.cleanfix.com)